

SEDIMENT TO SOLUTIONS: CHANNELING INNOVATION

THE PORT OF BALTIMORE IS A KEY
ECONOMIC DRIVER
for the State of Maryland

 \$3 Billion in annual wages & salaries
 30+ Million tons of cargo
 100K+ jobs

DREDGED MATERIAL
is sediment removed from the shipping channels

**DREDGING MAINTAINS SAFE
PASSAGE FOR VESSELS**
making their way through shipping
channels and keeps the Port
OPEN FOR BUSINESS

SEDIMENT (MOSTLY FINE SILTS,
CLAY, AND SOME SAND)
ACCUMULATES AND DEPOSITS IN THE SHIPPING CHANNELS

Dredged material is a
REPLENISHABLE RESOURCE
that can be **REPURPOSED**

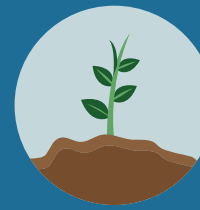
in a variety of ways to benefit the
economy and environment



**SITE
RECLAMATION**



**CONSTRUCTION
MATERIALS**



**MANUFACTURED
TOPSOIL**



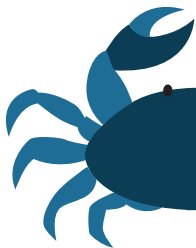
**ENVIRONMENTAL
RESTORATION**



**SEDIMENT IS
TESTED & ANALYZED TO**
ensure it meets environmental and
human health requirements

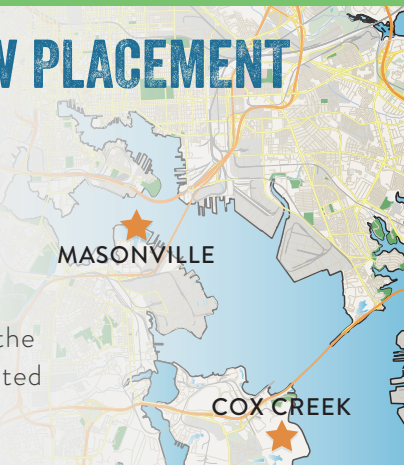


UP TO 5 MILLION CU. YARDS REMOVED PER YEAR
1.5 MILLION FROM THE
BALTIMORE HARBOR CHANNELS



**FINDING NEW PLACEMENT
CAPACITY
IS A CHALLENGE
IN THE BALTIMORE
REGION**

Property adjacent to the
Port is densely populated
and developed



**CURRENT
PLACEMENT
OPTIONS:
CONTAINMENT FACILITIES
& ENVIRONMENTAL SITES**
Cox Creek
Masonville
Poplar Island

THE MARYLAND DEPARTMENT OF TRANSPORTATION
**PORT ADMINISTRATION IS
EXPLORING
NEW
SOLUTIONS**
**INNOVATIVE
AND
BENEFICIAL USE**



HOW CAN WE MAKE INNOVATIVE & BENEFICIAL USE A REALITY?



The Maryland Department of Transportation Port Administration is committed to making innovative and beneficial use a significant part of the agency's management plans. A long-term strategy was approved in 2014, with the advice and input of key stakeholders and the public. As part of that work, the Interagency Regulatory Workgroup was formed in the summer of 2015 to identify policy recommendations and new processes to advance the potential for dredged material reuse.

The Workgroup's desired outcome is to establish a clear and transparent regulatory framework that facilitates opportunities for innovative products and beneficial use projects. Close coordination with regulatory agencies and other key partners, including the Innovative Reuse Committee, Harbor Team and other Dredged Material Management Program (DMMP) Committees, is taking place to ensure that these projects are safe to human and environmental health and can successfully be implemented. Representatives from the private sector, local governments, and industry are continuing to provide important feedback on this process so they can make dredged material a regular part of their business.



Tell us your thoughts on innovative and beneficial uses of dredged material by contacting us at: greenport@marylandports.com

Dredged material is valuable – removing it from shipping channels keeps the Port of Baltimore **OPEN FOR BUSINESS**, and exploring new uses can spur innovation, benefit the environment, and grow Maryland's economy.

**SEDIMENT TO SOLUTIONS:
CHANNELING INNOVATION**

Learn more at: www.marylandports.com/greenport/dmmp

